



BRIDGE PLUG & CEMENT RETAINER

Introduction

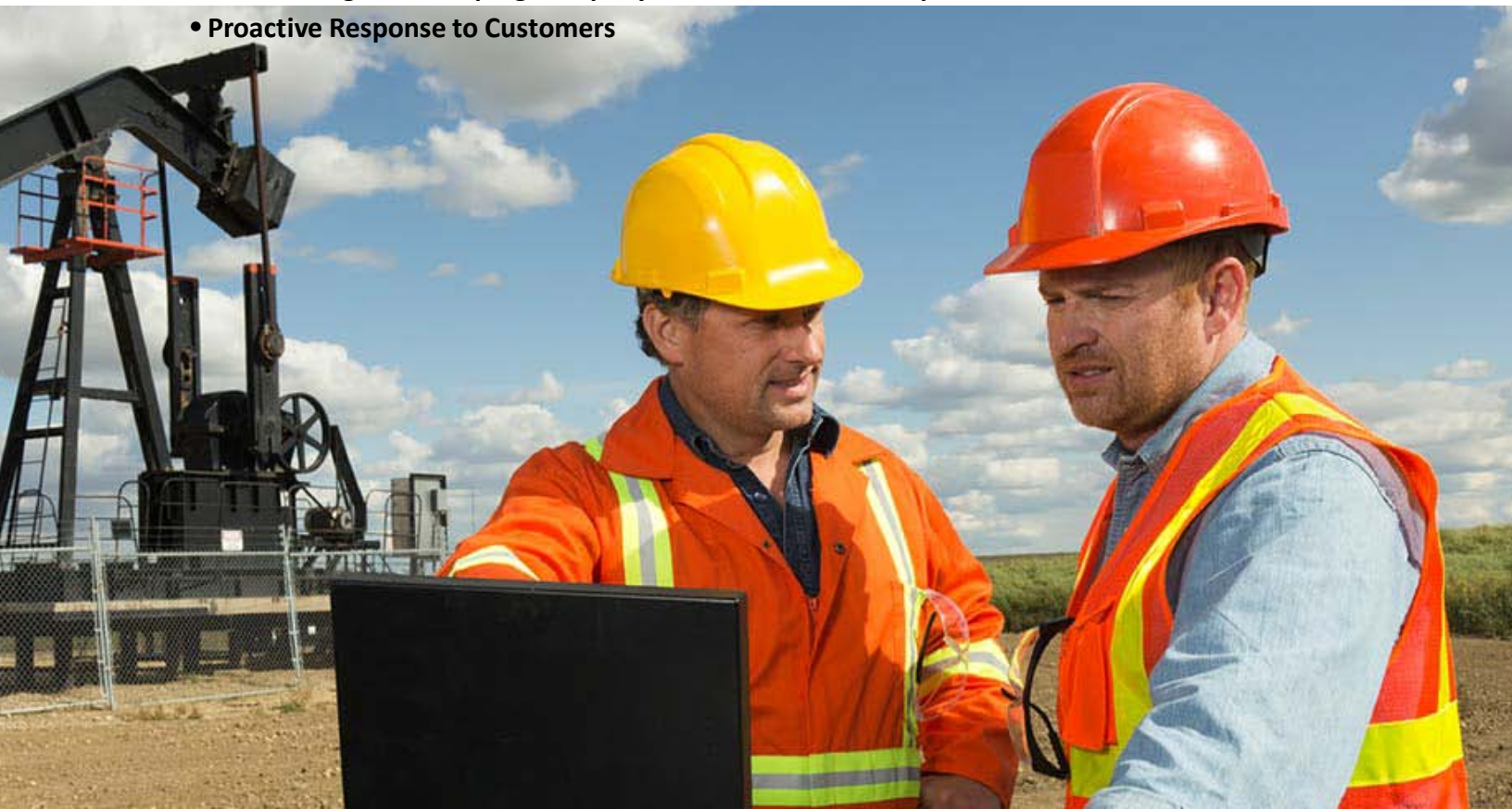
CPS is one of the leading certified company based in Vasai – Maharashtra. **CPS** is involved in manufacturing of Oil and Gas Equipments, with a state of art facility having the latest machineries to meet the quality standard of Oil and Gas industry.

Completion Equipments act as a barrier between the Surface and Reservoirs as they are heart of every completion. We at **CPS** understand the philosophy that any Loss of Production or Well Integrity can be saved with a proper selection of tool. With complete integrity, **CPS** has rights to manufacture Conventional Gas Lift Valve, Conventional Gas Lift Mandrel, Wireline Gas Lift Valve, Wireline Dummy Valve, Latches, Floating Equipments and centralizers to meet the demand of the global oil & gas market.

CPS has a well established testing facility includes TRO testing, Aging , hydro and shelf test to validate our products in different necessary aspects needed to fulfill the product requirements. We are in process for setting up flow loop facility, and High Temperature and High Pressure Testing cell to test our products in real environment.

We are focused on

- Quality of Products
- On time Delivery
- Fair Product Price
- Maintaining & Developing Company-Customer Relationship
- Proactive Response to Customers



Why us

- CPS has implemented Quality Management System compliance to API Spec Q1 9th Edition and has zeal to improve in all aspects to provide best products and services.
- CPS competitive thrust has been achieved by some stringent quality programs.
- CPS has installed quality checks coupled with the best testing facilities and have invested in the latest testing equipments.
- CPS has Innovative and well qualified passionate team to provide engineered solutions to all customer requirements.
- CPS has latest machineries and quality instruments to meet the manufacturing requirements along with desired quality .
- CPS has Testing unit to test and validate products to various API specification.

3



Product Range

- **Bridge Plug**
 - Midget Type
 - Big Boy Type
- **Cement Retainer**



Bridge Plug(Size2-3/8"-13-3/8")

A downhole tool that is located and set to isolate the lower part of the wellbore. Bridge plugs may be permanent or retrievable, enabling the lower wellbore to be permanently sealed from production or temporarily isolated from a treatment conducted on an upper zone.

We deal in wireline type bridge plug which we supply in two designs:

1. Big Boy bridge plug
2. Midget bridge plug



Big Boy Features

- Electric wireline set
- Drillable
- Cast iron construction
- One piece slips - hardened to wicker
- Sets in any grade casing including P-110
- Form-fitting metal back-ups prevent rubber extrusion
- For temporary or permanent service
- Ratcheting lock ring holds setting force



Midget Features

- Electric wireline set
- Drillable
- Cast iron construction
- One piece slips - hardened to wicker
- Sets in any grade casing including P-110
- For temporary or permanent service
- Ratcheting lock ring holds setting force
- Ratcheting lock ring holds setting force



6

Cement Retainer (4-1/2"-5-1/2")

Wireline set cement retainer is a high quality tool for squeeze cementing. The bypass valve is controlled from the surface by simply picking up to close and setting down to open. The valve is automatically closed when the stinger is removed from the retainer. This retainer plug sustains high pressure and temperature.

Features

- Electric wireline set.
- Drillable.
- Cast iron construction.
- One piece slips - hardened to depth of wicker only.
- Sets in any grade casing including P-110.
- Metal back-up rings prevent rubber extrusion.
- For temporary or permanent service.
- Ratcheting lock ring holds setting force.

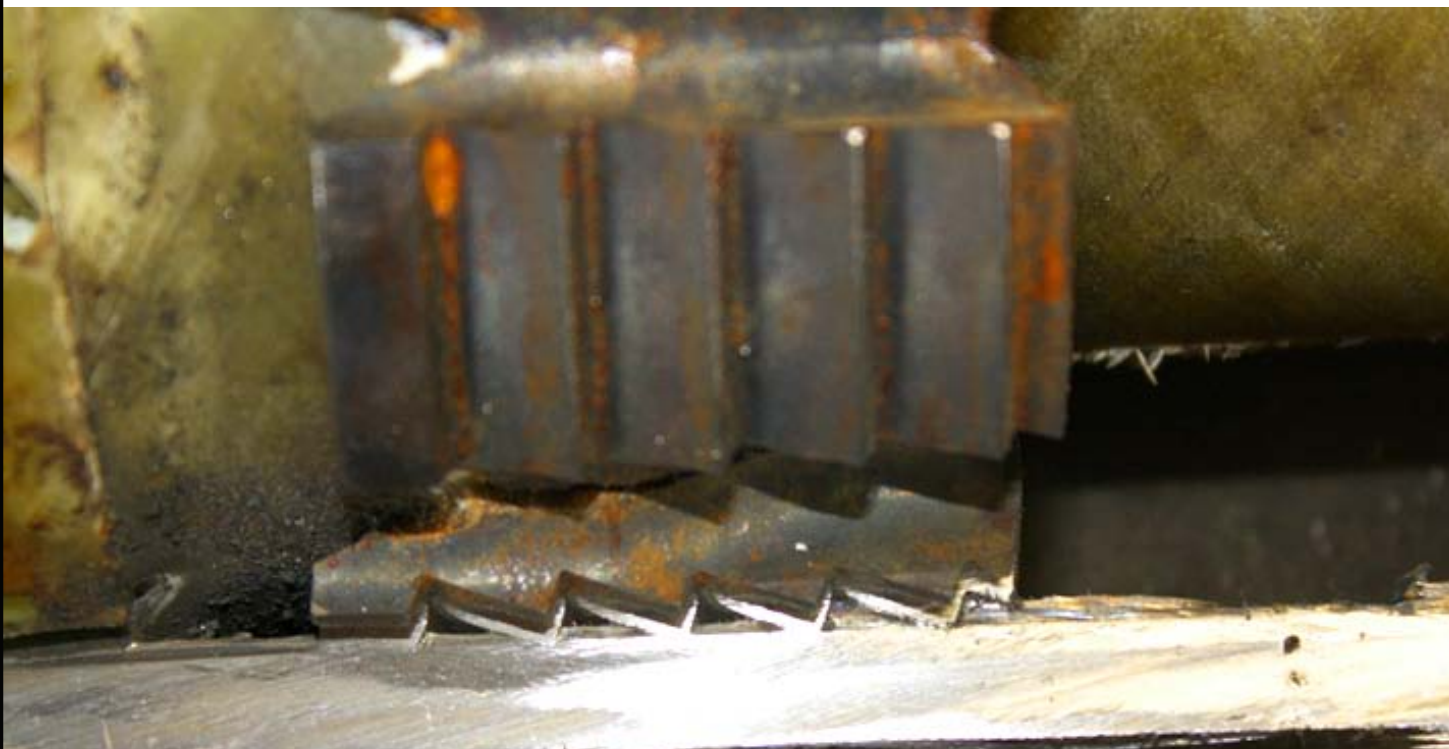


Technical specification

CASING		PLUG	SETTING RANGE	SETTING TOOL	ELASTOMER
O.D.	PPF	O.D.			
2-3/8	3.3-5.9	1.71	1.867-2.107	B05	NITRILE*
3-1/2	5.7-10.2	2.75	2.867-3.258	B10	
4-1/2	9.5-15.1	3.50	3.826-4.090	B10	
5-1/2	13.0-25.0	4.24	4.580-5.047	B20	
7.0	17.0-35.0	5.61	5.989-6.655	B20	
9-5/8	29.3-53.5	7.71	8.435-9.063	B20	
13-3/8	48.0-72.0	12.0	12.347-12.715	B20	

CASING		RETAINER	SETTING RANGE	SETTING TOOL	ELASTOMER
O.D.	PPF	O.D.			
4-1/2	9.5-15.1	3.593	3.826-4.090	B10	NITRILE*
5-1/2	13.0-23.0	4.312	4.670-5.118	B20	

***- CPS can also provide the bridge plug and cement retainer in HNBR or higher grade elastomer. Other sizes are also available on request.**



For any further query please contact us on



**REGD. OFFICE - 23-28 , PHASE V, PARMAR TECHNO CENTRE, WESTERN EXPRESS HIGHWAY ,
VASAI EAST, THANE DIST., MAHARASHTRA, INDIA-401208**



EMAIL : - SALES@CPSOG.COM